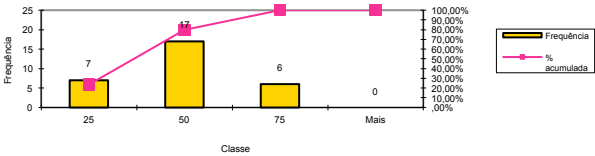


Bloco	Frequência	% acumulada	% relativa
25	7	23,33%	23,33%
50	17	80,00%	56,67%
75	6	100,00%	20,00%
Mais	0	100,00%	0,00%

A

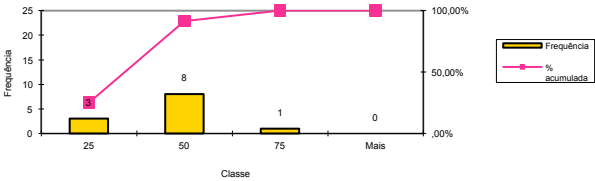
Histograma ARGILA (tigo+leguminosa)



Bloco	Frequência	% acumulada	% relativa
25	3	25,00%	25,00%
50	8	91,67%	66,67%
75	1	100,00%	8,33%
Mais	0	100,00%	0,00%

B

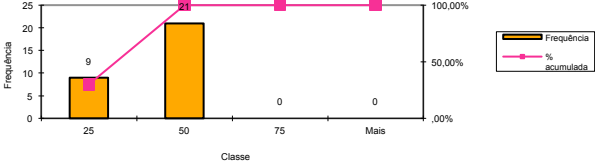
Histograma ARGILA (pastagem)



Bloco	Frequência	% acumulada	% relativa
25	9	30,00%	30,00%
50	21	100,00%	70,00%
75	0	100,00%	0,00%
Mais	0	100,00%	0,00%

C

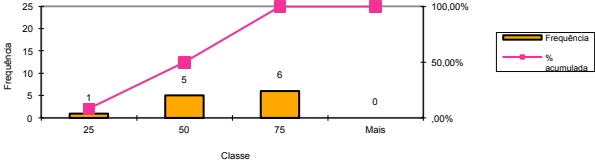
Histograma LIMO (tigo+leguminosa)



Bloco	Frequência	% acumulada	% relativa
25	1	8,33%	8,33%
50	5	50,00%	41,67%
75	6	100,00%	50,00%
Mais	0	100,00%	0,00%

D

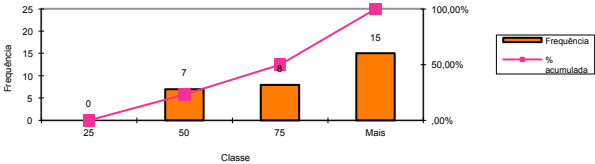
Histograma LIMO (pastagem)



Bloco	Frequência	% acumulada	% relativa
25	0	,00%	,00%
50	7	23,33%	23,33%
75	8	50,00%	26,67%
Mais	15	100,00%	50,00%

E

Histograma ARGILA+LIMO (tigo+leguminosa)



Bloco	Frequência	% acumulada	% relativa
25	1	8,33%	8,33%
50	0	8,33%	0,00%
75	3	33,33%	25,00%
Mais	8	100,00%	66,67%

F

Histograma ARGILA+LIMO (pastagem)

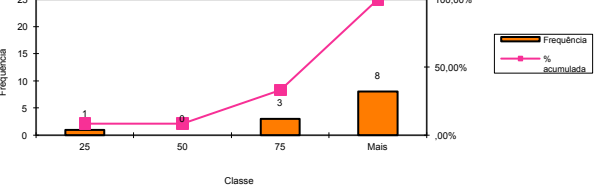
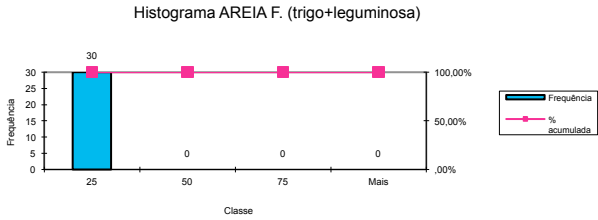


Figura 49

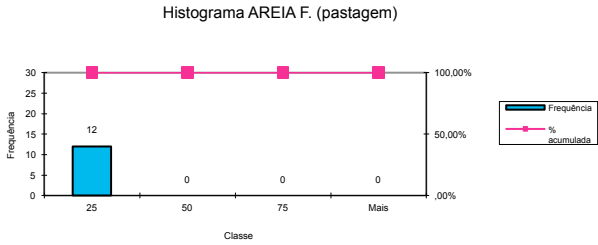
Bloco	Frequência	% acumulada	% relativa
25	30	100,00%	100,00%
50	0	100,00%	0,00%
75	0	100,00%	0,00%
Mais	0	100,00%	0,00%

A



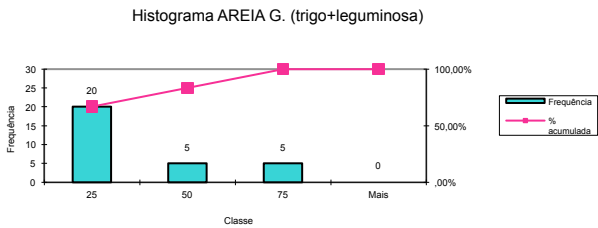
Bloco	Frequência	% acumulada	% relativa
25	12	100,00%	100,00%
50	0	100,00%	0,00%
75	0	100,00%	0,00%
Mais	0	100,00%	0,00%

B



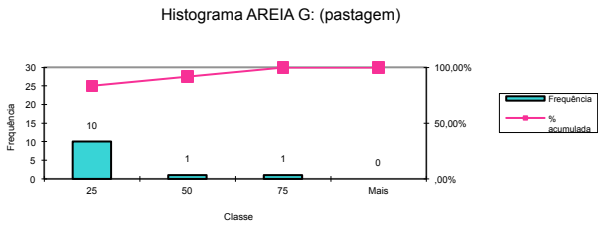
Bloco	Frequência	% acumulada	% relativa
25	20	66,67%	66,67%
50	5	83,33%	16,67%
75	5	100,00%	16,67%
Mais	0	100,00%	0,00%

C



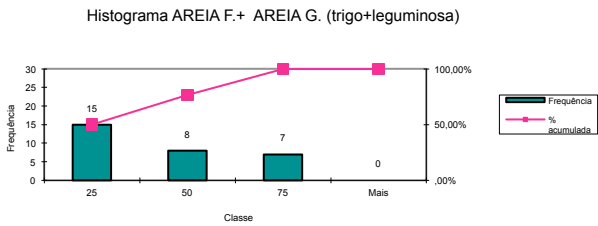
Bloco	Frequência	% acumulada	% relativa
25	10	83,33%	83,33%
50	1	91,67%	8,33%
75	1	100,00%	8,33%
Mais	0	100,00%	0,00%

D



Bloco	Frequência	% acumulada	% relativa
25	15	50,00%	50,00%
50	8	76,67%	26,67%
75	7	100,00%	23,33%
Mais	0	100,00%	0,00%

E



Bloco	Frequência	% acumulada	% relativa
25	8	66,67%	66,67%
50	3	91,67%	25,00%
75	1	100,00%	8,33%
Mais	0	100,00%	0,00%

F

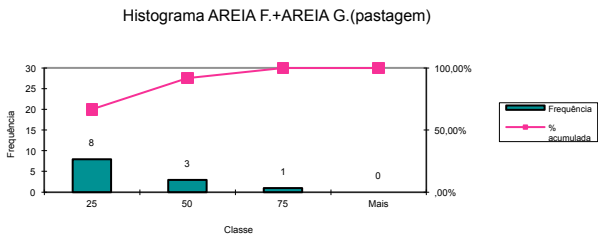
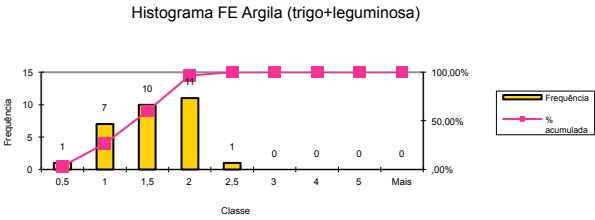


Figura 50

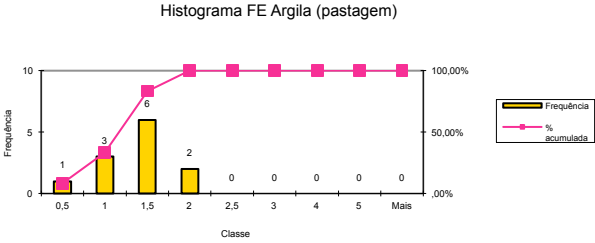
Bloco	Frequência	% acumulada	% relativa
0,5	1	3,33%	3,33%
1	7	26,67%	23,33%
1,5	10	60,00%	33,33%
2	11	96,67%	36,67%
2,5	1	100,00%	3,33%
3	0	100,00%	0,00%
4	0	100,00%	0,00%
5	0	100,00%	0,00%
Mais	0	100,00%	0,00%

A



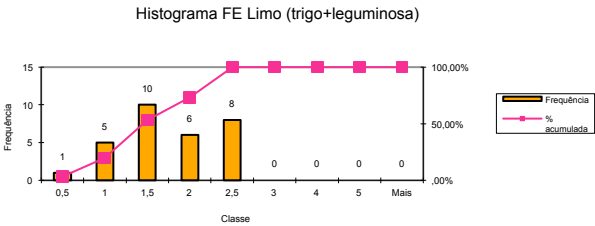
Bloco	Frequência	% acumulada	% relativa
0,5	1	8,33%	8,33%
1	3	33,33%	25,00%
1,5	6	83,33%	50,00%
2	2	100,00%	16,67%
2,5	0	100,00%	0,00%
3	0	100,00%	0,00%
4	0	100,00%	0,00%
5	0	100,00%	0,00%
Mais	0	100,00%	0,00%

B



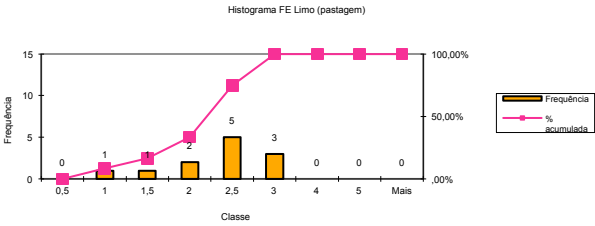
Bloco	Frequência	% acumulada	% relativa
0,5	1	3,33%	3,33%
1	5	20,00%	16,67%
1,5	10	53,33%	33,33%
2	6	73,33%	20,00%
2,5	8	100,00%	26,67%
3	0	100,00%	0,00%
4	0	100,00%	0,00%
5	0	100,00%	0,00%
Mais	0	100,00%	0,00%

C



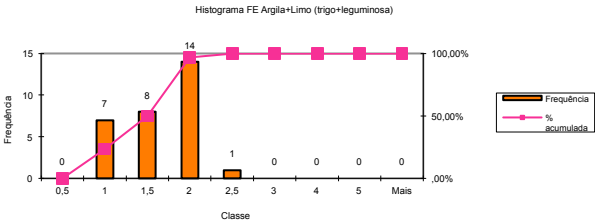
Bloco	Frequência	% acumulada	% relativa
0,5	0	,00%	,00%
1	1	8,33%	8,33%
1,5	1	16,67%	8,33%
2	2	33,33%	16,67%
2,5	5	75,00%	41,67%
3	3	100,00%	25,00%
4	0	100,00%	0,00%
5	0	100,00%	0,00%
Mais	0	100,00%	0,00%

D



Bloco	Frequência	% acumulada	% relativa
0,5	0	,00%	,00%
1	7	23,33%	23,33%
1,5	8	50,00%	26,67%
2	14	96,67%	46,67%
2,5	1	100,00%	3,33%
3	0	100,00%	0,00%
4	0	100,00%	0,00%
5	0	100,00%	0,00%
Mais	0	100,00%	0,00%

E



Bloco	Frequência	% acumulada	% relativa
0,5	1	8,33%	8,33%
1	0	8,33%	0,00%
1,5	3	33,33%	25,00%
2	8	100,00%	66,67%
2,5	0	100,00%	0,00%
3	0	100,00%	0,00%
4	0	100,00%	0,00%
5	0	100,00%	0,00%
Mais	0	100,00%	0,00%

F

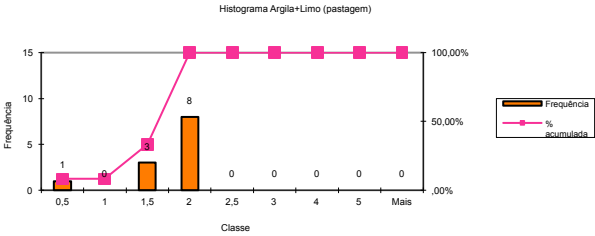
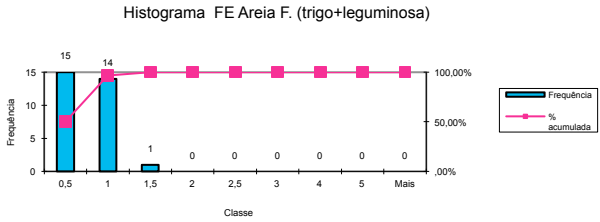


Figura 52

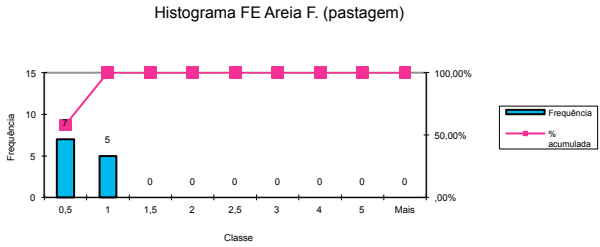
Bloco	Frequência	% acumulada	% relativa
0,5	15	50,00%	50,00%
1	14	96,67%	46,67%
1,5	1	100,00%	3,33%
2	0	100,00%	0,00%
2,5	0	100,00%	0,00%
3	0	100,00%	0,00%
4	0	100,00%	0,00%
5	0	100,00%	0,00%
Mais	0	100,00%	0,00%

A



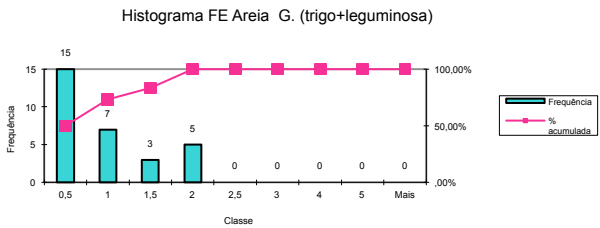
Bloco	Frequência	% acumulada	% relativa
0,5	7	58,33%	58,33%
1	5	100,00%	41,67%
1,5	0	100,00%	0,00%
2	0	100,00%	0,00%
2,5	0	100,00%	0,00%
3	0	100,00%	0,00%
4	0	100,00%	0,00%
5	0	100,00%	0,00%
Mais	0	100,00%	0,00%

B



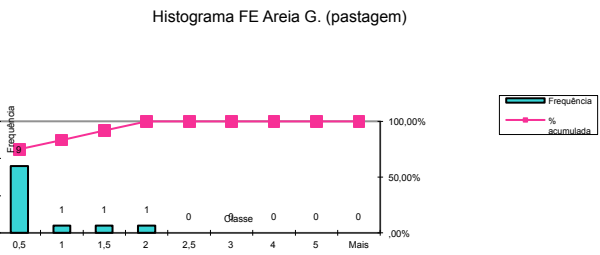
Bloco	Frequência	% acumulada	% relativa
0,5	15	50,00%	50,00%
1	7	73,33%	23,33%
1,5	3	83,33%	10,00%
2	5	100,00%	16,67%
2,5	0	100,00%	0,00%
3	0	100,00%	0,00%
4	0	100,00%	0,00%
5	0	100,00%	0,00%
Mais	0	100,00%	0,00%

C



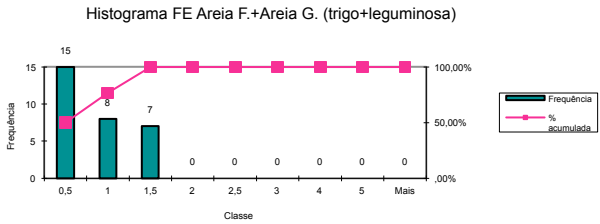
Bloco	Frequência	% acumulada	% relativa
0,5	9	75,00%	75,00%
1	1	83,33%	8,33%
1,5	1	91,67%	8,33%
2	1	100,00%	8,33%
2,5	0	100,00%	0,00%
3	0	100,00%	0,00%
4	0	100,00%	0,00%
5	0	100,00%	0,00%
Mais	0	100,00%	0,00%

D



Bloco	Frequência	% acumulada	% relativa
0,5	15	50,00%	50,00%
1	8	76,67%	26,67%
1,5	7	100,00%	23,33%
2	0	100,00%	0,00%
2,5	0	100,00%	0,00%
3	0	100,00%	0,00%
4	0	100,00%	0,00%
5	0	100,00%	0,00%
Mais	0	100,00%	0,00%

E



Bloco	Frequência	% acumulada	% relativa
0,5	8	66,67%	66,67%
1	3	91,67%	25,00%
1,5	0	91,67%	0,00%
2	1	100,00%	8,33%
2,5	0	100,00%	0,00%
3	0	100,00%	0,00%
4	0	100,00%	0,00%
5	0	100,00%	0,00%
Mais	0	100,00%	0,00%

F

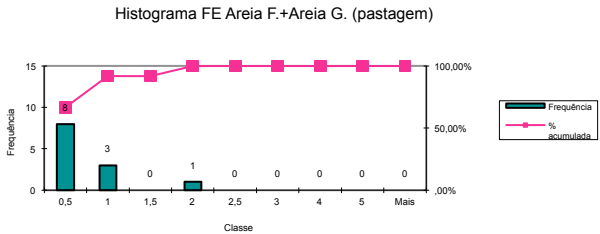
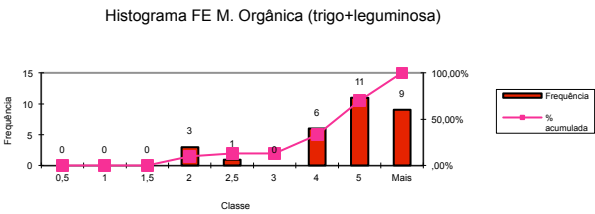


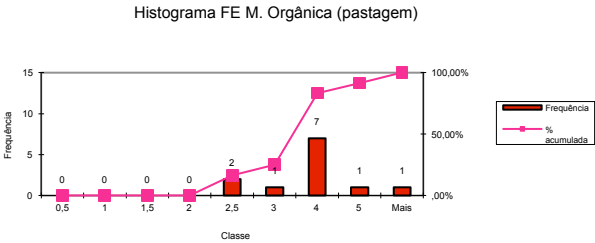
Figura 53

Bloco	Frequência	% acumulada	% relativa
0,5	0	,00%	,00%
1	0	,00%	0,00%
1,5	0	,00%	0,00%
2	3	10,00%	10,00%
2,5	1	13,33%	3,33%
3	0	13,33%	0,00%
4	6	33,33%	20,00%
5	11	70,00%	36,67%
Mais	9	100,00%	30,00%



A

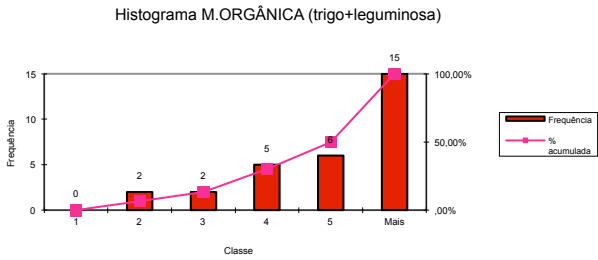
Bloco	Frequência	% acumulada	% relativa
0,5	0	,00%	,00%
1	0	,00%	0,00%
1,5	0	,00%	0,00%
2	0	,00%	0,00%
2,5	2	16,67%	16,67%
3	1	25,00%	8,33%
4	7	83,33%	58,33%
5	1	91,67%	8,33%
Mais	1	100,00%	8,33%



B

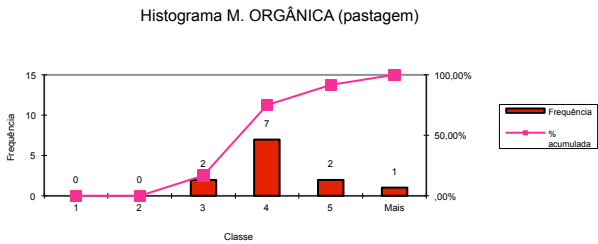
Figura 54

Bloco	Frequência	% acumulada	% relativa
1	0	,00%	,00%
2	2	6,67%	6,67%
3	2	13,33%	6,67%
4	5	30,00%	16,67%
5	6	50,00%	20,00%
Mais	15	100,00%	50,00%



A

Bloco	Frequência	% acumulada	% relativa
1	0	,00%	,00%
2	0	,00%	0,00%
3	2	16,67%	16,67%
4	7	75,00%	58,33%
5	2	91,67%	16,67%
Mais	1	100,00%	8,33%



B

Figura 51